

# WYMAN CLASSROOM 2007 INTRODUCTION

## WELCOME

Each of the 12 WEB classrooms is equipped with the following: Ceiling-mounted LCD Projector with remote control, connected to a MAC, to a PC and to a VCR/DVD player (with its own remote control). Each computer has its own wireless remote mouse which allows you to control computer presentations from anywhere in the room. Each classroom is assigned 2 whiteboard markers and erasers, and an overhead transparency projector. Technical assistance is available at the Educational Technology Center front desk.



*For a personalized introduction to your Wyman classroom, contact:  
Karen Ryan, x3184 or EdTech Center Front Desk, x3837.*

## NOTE:

Ed Tech Center (ETC) staff members secure all classroom doors. Faculty do not need keys.

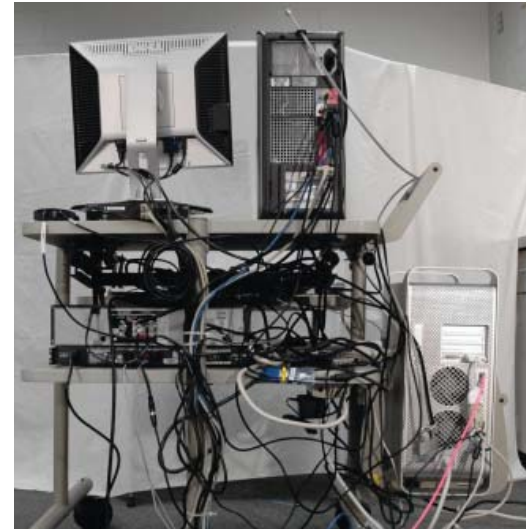
## COMPUTER CARTS

- Each TEC cart holds a Mac and PC.
- Macs use white mice and keyboards, PCs, black.
- USB ports are on the front of every PC.
- The computer monitor is controlled through a display switcher, while the LCD projector is controlled via a remote.
- Separate, mobile touch screens called Sympodium displays are available upon request.
- Audio and Video controls are on the lower shelf.



## COMPUTER CARTS

- The model of Mac varies by room. Aluminum Macs feature a USB port on the Front. Plastic Macs have a USB hub in the left side of the monitor.
- PCs are standardized through the classrooms and have several USB ports on the front.
- Wooden cart surrounds will soon be in place to prevent moving the equipment and to limit access to the cables. Until then, please do not move carts out of the blue tape boundaries or rewire equipment.
- PCs are the only computers able to log in to the Novell filesystem.



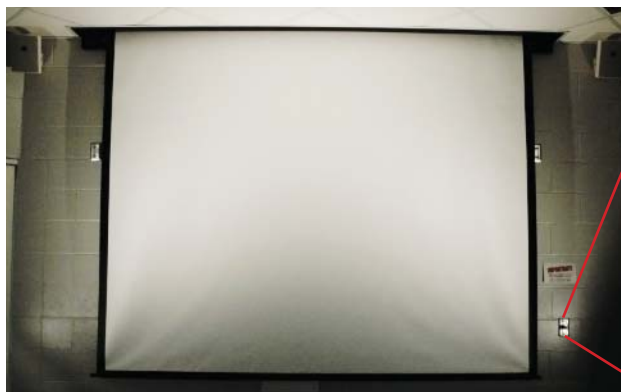
## DISPLAY SWITCHING

- The display switcher is located under the monitor. Select “Mac” or “PC” on the button panel.
- The video out jack is easily jarred by moving the TEC cart. This is recognizable by a blue screen cast and can be remedied by resealing the VGA plug to the socket.



## PROJECTOR SCREEN

- The screen is operated via a key-turned switch mounted on the wall.
- In raising the screen, leave at least one foot of the screen extended to avoid the end being caught in the winding mechanism.

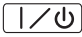


# LCD PROJECTOR

- Each classroom has a ceiling-mounted LCD projector connected to the display switcher and DVD player.
- Switching inputs depends on the LCD projector remote:
  - Sony remotes have a single button cycler under the green button.
  - Sharp remotes have a button for each of four inputs.
- Personal laptops cannot be connected to the LCD projectors in Wyman. Please consider using a flash drive for classroom files.

## NOTE:

Projector must be completely turned off after every use;  
 1. Point projector remote at screen.  
 2. Press power button second time after seeing message:

POWER OFF?  
 Please press  key again.

# LCD PROJECTOR INPUT SELECTION



The Sony remote has one button that cycles through inputs.



The Sharp remote has four buttons labeled for use.  
 Input 1 - computers  
 Input 2 - video

# WIRELESS MOUSE KEYSPAN

- The wireless remote controls the computer's mouse pointer with the large gray button.
- The right and left silver buttons correspond to mouse buttons.
- The side dial switch allows for volume control on PCs.
- There is one keyspan remote for each computer.



## AUDIO

- All audio is controlled by the amplifier on the lower TEC shelf.
- The Amplifier's power button is the large central button, and the speaker connection button is to the right and smaller.
- When powered and connected the buttons glow blue and tangerine, respectively.
- There is no master volume, left and right channels are controlled independently.
- Recommended setting for each channel: 10 o'clock.



## VIDEO

- There is a DVD / VCR player on the TEC cart. To use the player, insert a DVD and switch the LCD projector to the video input.
- The DVD player must be selected by the VCR/ DVD controls on the remote or on the deck.



## SYMPODIUM

- The Sympodium is a touch screen interface to a computer. It also allows for drawing capabilities within PowerPoint and SMART applications.
- To connect to a computer:
  - Detach the labeled VGA coupling and attach the Sympodium VGA cable.
  - Attach the USB cable to the Switcher.
  - Plug in the Sympodium Power Cable.
  - Use the Switcher to select the computer you wish to display on the Sympodium.

